

Unofficial and Fan Made boxes by Tyinsar
Print pages on heavy cardstock (110lb / 199g/m2)

Player Piece Box Bottoms:

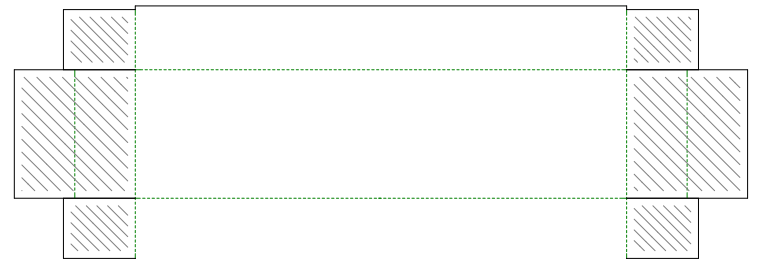
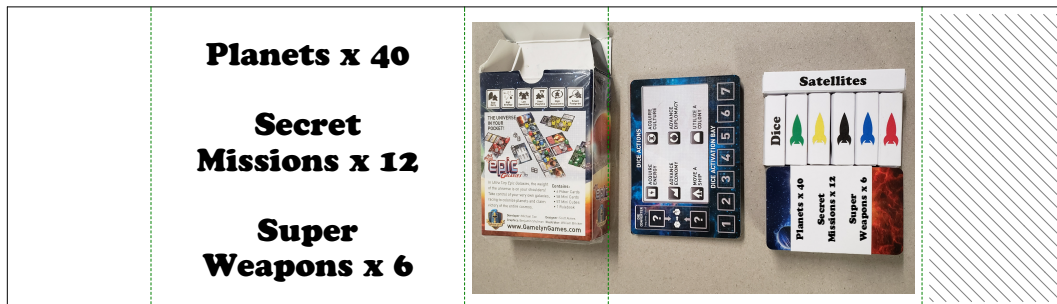
- 1- Cut out box bottoms
- 2- Fold up sides & fold tabs in. (all 90°)
- 3- Apply glue to end tabs (area with diagonal lines). and fold over side tabs.

Player Piece Box Sleeves:

- 1- Crease paper along black arrow lines.
- 2- Cut from red arrow to red arrow. -
Do NOT cut all the way to the edge of the paper or you will lose the arrows pointing to the other cuts!
- 3- Fold & apply glue to area with diagonal lines.



Card Wrap



1) Fold at black arrows
2) cut at red lines - Do not cut to edge

